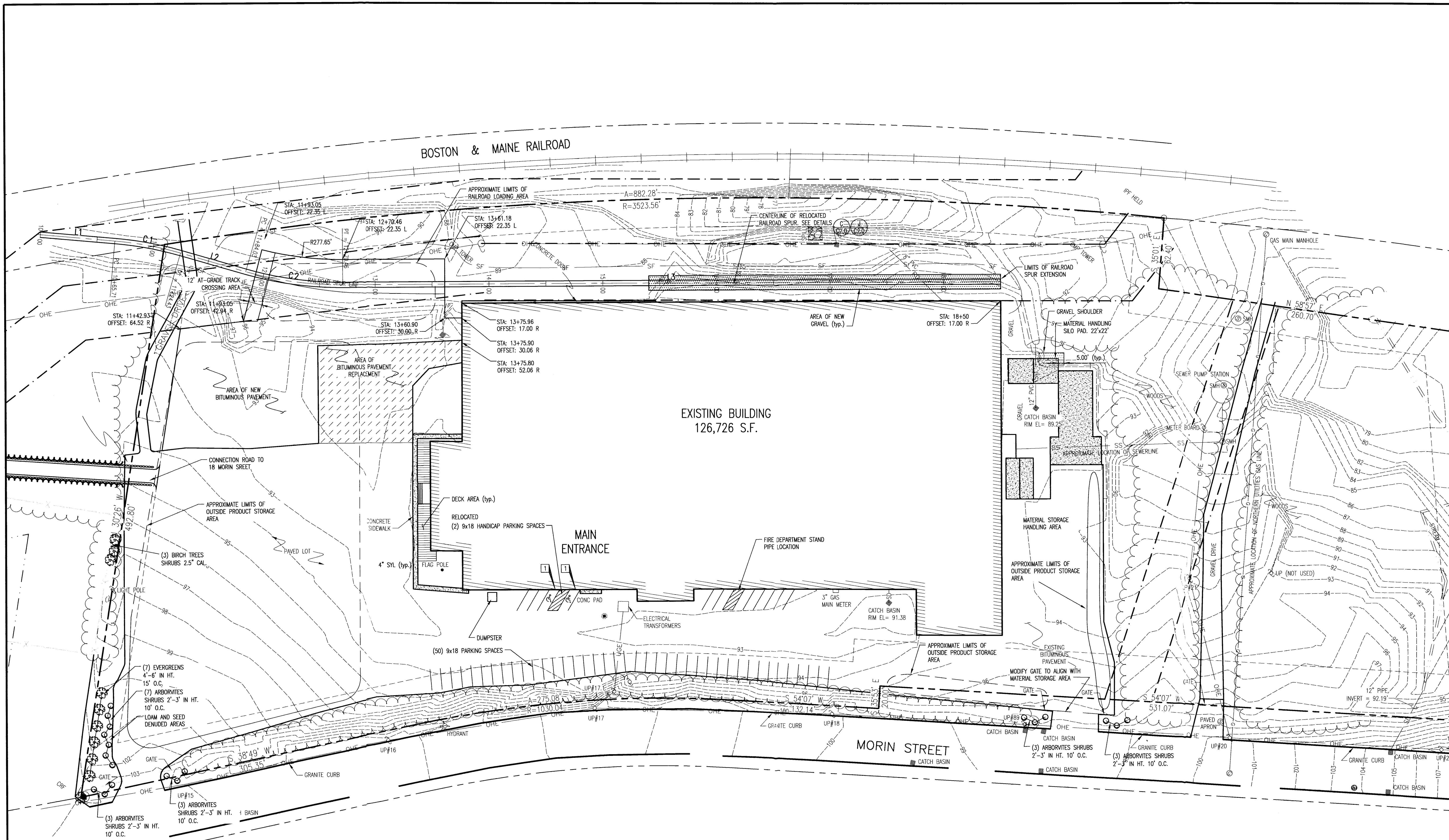


**CORRECT BUILDING PRODUCTS
MODIFICATION OF MAJOR SITE PLAN
8 MORIN STREET
BIDDEFORD, MAINE 04005**

BY: JTA
REV. #2 MODIFIED PER COMMENTS 11-20-07
REV. #1 SUBMISSION TO THE CITY 10-16-07



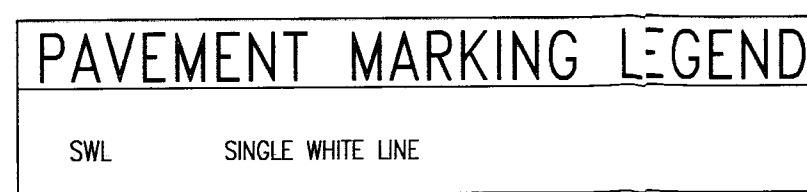
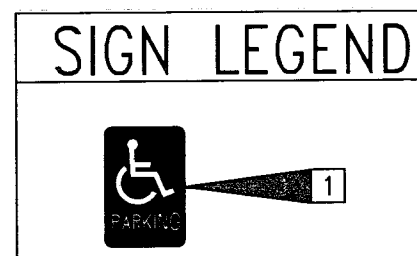
NOTES:

1. THIS PROPERTY IS GOVERNED BY THE PROVISIONS OF THE BIDDEFORD INDUSTRIAL PARK COVENANTS.

IMPERVIOUS AREA	
TOTAL LOT AREA =	11.54 ACRES
TOTAL PERMITTED IMPERVIOUS AREA =	7.26 ACRES

CURVE TABLE			
CURVE	LENGTH	RADIUS	CHORD BEARING
C1	58.72	300.00	S61°25'42"W
C2	86.43	300.00	N58°46'57"E

LINE TABLE		
LINE	LENGTH	BEARING
L1	65.71	N55°49'16"E
L2	59.60	N67°02'09"E
L3	579.54	N50°31'46"E



ZONING REQUIREMENTS

SPACE AND BULK REQUIREMENTS
REFERENCE: CITY OF BIDDEFORD CODE OF ORDINANCES, CURRENT EDITION ON-LINE

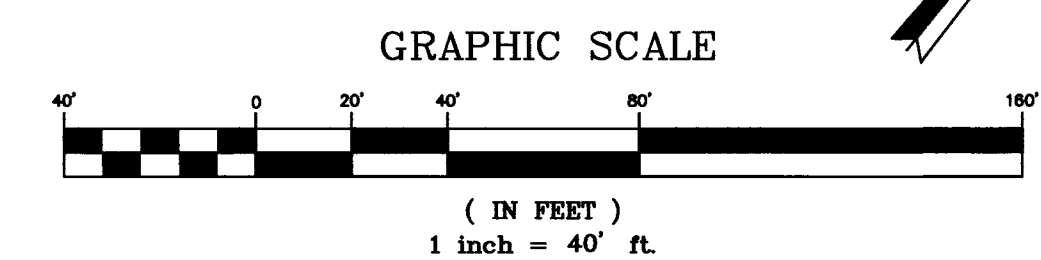
CRITERIA: ZONING
REQUIRED: I-1 INDUSTRIAL ZONE;
LIGHT MANUFACTURING/INDUSTRIAL PERMITTED

SETBACKS: FRONT 40' TO MAJOR ACCESS RIGHT OF WAY
SIDE 25'
REAR 25'
LOT FRONTAGE 50'
LOT SIZE NONE
LOADING BAYS 100,000 S.F. TO 160,000 S.F. BUILDING;
THREE BAYS REQUIRED
PARKING SPACES 90' PARKING; 9' WIDE BY 18' DEEP
NO. OF PARKING SPACES 1 SPACE/EMPLOYEE ON THE MAXIMUM WORKING SHIFT
DRIVE AISLE WIDTH 24'
LOT PERCENTAGE OF IMPERVIOUS AREA 75%

PROVIDED:
PER ARTICLE II, PROPOSED REDEVELOPMENT MEETS DEFINITION OF LIGHT MANUFACTURING/INDUSTRIAL; PERMITTED USE
APPROX. 47' MIN.
APPROX. 258' MIN.
APPROX. 82' MIN.
1,264'
11.54 ACRES
126,000 S.F. PRIMARY BUILDING; 3 BAYS
90' PARKING; 9' WIDE BY 18' DEEP
50 EMPLOYEES, 50 SPACES
24' MIN.
63%

OWNER / APPLICANT

CORRECT BUILDING PRODUCTS
8 MORIN STREET
BIDDEFORD, MAINE 04005
TAX MAP 12, LOT 24



**CITY OF BIDDEFORD
PLANNING BOARD APPROVAL**

CHAIR: *Debra E. ...* DATE: 1/16/08
Harry ...
Jamie ...
Robert ...
Steve W. ...

JEFF ACETO, P.E.
DURHAM MAINE
207.650.5674

SITE DEVELOPMENT PLAN

DRAWN BY: JTA

PLAN DATE: 06/29/07
C-1.0