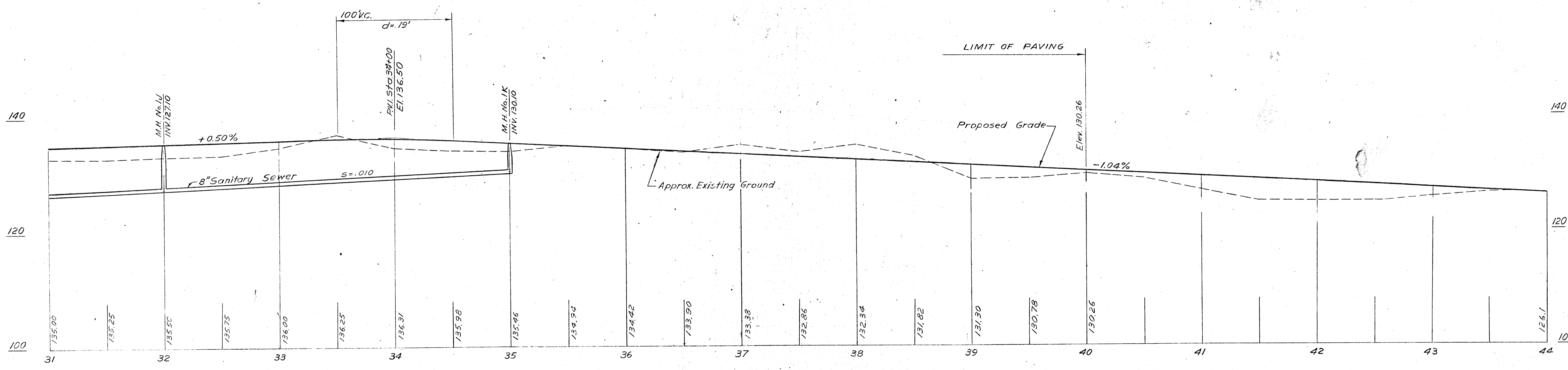
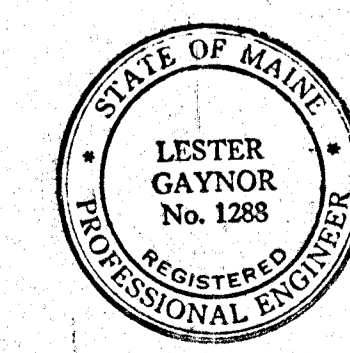


PLAN
Scale: 1"=40'



PROFILE
Hor. 1"=40'
Vert. 1"=8'



October 1967 As Built Plan

CITY OF BIDDEFORD, MAINE	
PROPOSED INDUSTRIAL PARK	
STREETS AND UTILITIES 'A' STREET	
PLAN and PROFILE	
GREEN ENGINEERING AFFILIATES, INC. BOSTON MASS.	
DESIGNED BY: E.V.L. DRAWN BY: P.N. CHECKED BY: T.M.	SCALE: AS SHOWN DATE: JULY, 1966
PLAN NO. 5 OF 16	