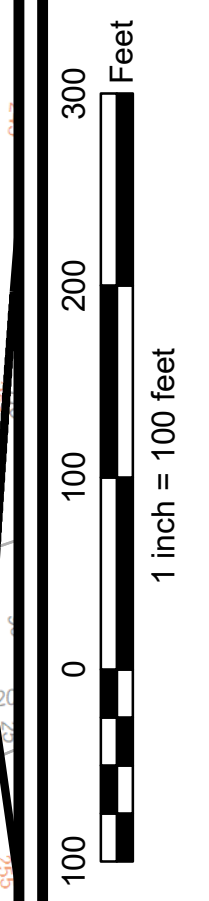


8-3-1

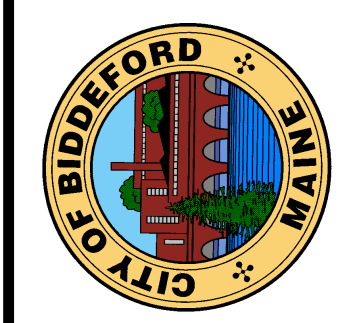


North is based on the
Maine State
Coordinate System
NAD 1983
North Rotation is 320°



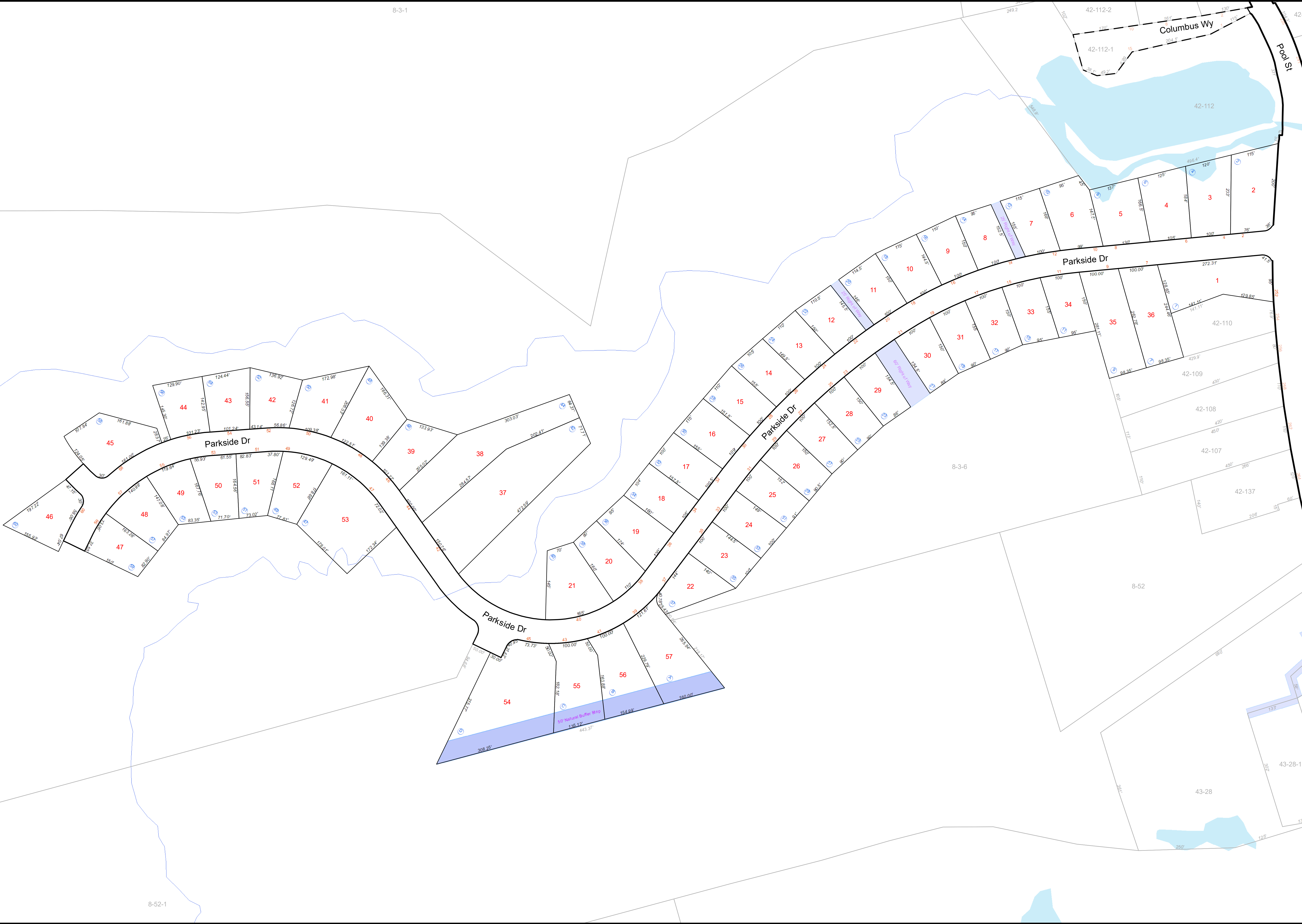
UPDATED THROUGH APRIL 1, 2020
FOR ASSESSMENT PURPOSES ONLY
NOT TO BE USED FOR CONVEYANCES

The City of Biddeford, Maine
OFFICIAL TAX MAP
Office of The Tax Assessor
Nicholas D. Desjardins, CMA
Assessor



This Map is Prepared By
The City of Biddeford, Maine
Technology Department
GIS Division
205 Main Street - P.O. Box 586 - Biddeford, Maine 04005
207-571-0660 - gis@biddefordmaine.org

86
Tax Map



8-52-1

8-3-6

8-52

43-28

43-28-1

42-112-1

42-112-2

42-112

42-110

42-109

42-108

42-107

42-137

8-52-1

8-3-6

8-52

43-28

43-28-1

42-112-1

42-112-2

42-112

42-110

42-109

42-108

42-107

42-137

8-52-1

8-3-6

8-52

43-28

43-28-1

42-112-1

42-112-2

42-112

42-110

42-109

42-108

42-107

42-137

8-52-1

8-3-6

8-52

43-28

43-28-1

42-112-1

42-112-2

42-112

42-110

42-109

42-108

42-107

42-137

8-52-1

8-3-6

8-52

43-28

43-28-1

42-112-1

42-112-2

42-112

42-110

42-109

42-108

42-107

42-137

8-52-1

8-3-6

8-52

43-28

43-28-1

42-112-1

42-112-2

42-112

42-110

42-109

42-108

42-107

42-137

8-52-1

8-3-6

8-52

43-28

43-28-1

42-112-1

42-112-2

42-112

42-110

42-109

42-108

42-107

42-137

8-52-1

8-3-6

8-52

43-28

43-28-1

42-112-1

42-112-2

42-112

42-110

42-109

42-108

42-107

42-137

8-52-1

8-3-6

8-52

43-28

43-28-1

42-112-1

42-112-2

42-112

42-110

42-109

42-108

42-107

42-137

8-52-1

8-3-6

8-52

43-28

43-28-1

42-112-1

42-112-2

42-112

42-110

42-109

42-108

42-107

42-137

8-52-1

8-3-6

8-52

43-28

43-28-1

42-112-1

42-112-2

42-112

42-110

42-109

42-108

42-107

42-137

8-52-1

8-3-6

8-52

43-28

43-28-1

42-112-1

42-112-2

42-112

42-110

42-109

42-108

42-107

42-137

8-52-1

8-3-6

8-52

43-28

43-28-1

42-112-1

42-112-2

42-112

42-110

42-109

42-108

42-107

42-137

8-52-1

8-3-6

8-52

43-28

43-28-1

42-112-1

42-112-2

42-112

42-110

42-109

42-108

42-107

42-137

8-52-1

8-3-6

8-52

43-28

43-28-1

42-112-1

42-112-2

42-112

42-110

42-109

42-108

42-107

42-137

8-52-1

8-3-6

8-52

43-28

43-28-1

42-112-1

42-112-2

42-112

42-110

42-109

42-108

42-107

42-137

8-52-1

8-3-6

8-52

43-28

43-28-1

42-112-1

42-112-2

42-112

42-110

42-109

42-108

42-107

42-137

8-52-1

8-3-6

8-52

43-28

43-28-1

42-112-1

42-112-2

42-112

42-110

42-109

42-108

42-107

42-137

8-52-1

8-3-6

8-52

43-28

43-28-1

42-112-1

42-112-2

42-112

42-110

42-109

42-108

42-107

42-137

8-52-1

8-3-6

8-52

43-28

43-28-1

42-112-1

42-112-2

42-112

42-110

42-109

42-108

42-107

42-137

8-52-1

8-3-6

8-52

43-28

43-28-1

42-112-1

42-112-2

42-112

42-110

42-109

42-108

42-107

42-137

8-52-1

8-3-6

8-52

43-28

43-28-1

42-112-1

42-112-2

42-112

42-110

42-109

42-108

42-107

42-137

8-52-1

8-3-6

8-52

43-28

43-28-1

42-112-1