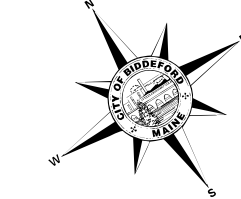


DAYTON

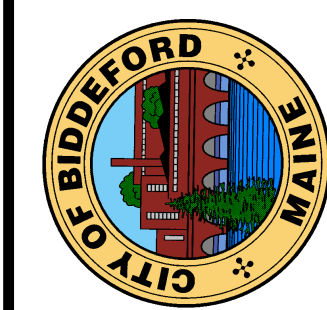


North is based on the
Maine State
Coordinate System
NAD 1983
North Rotation is 33°



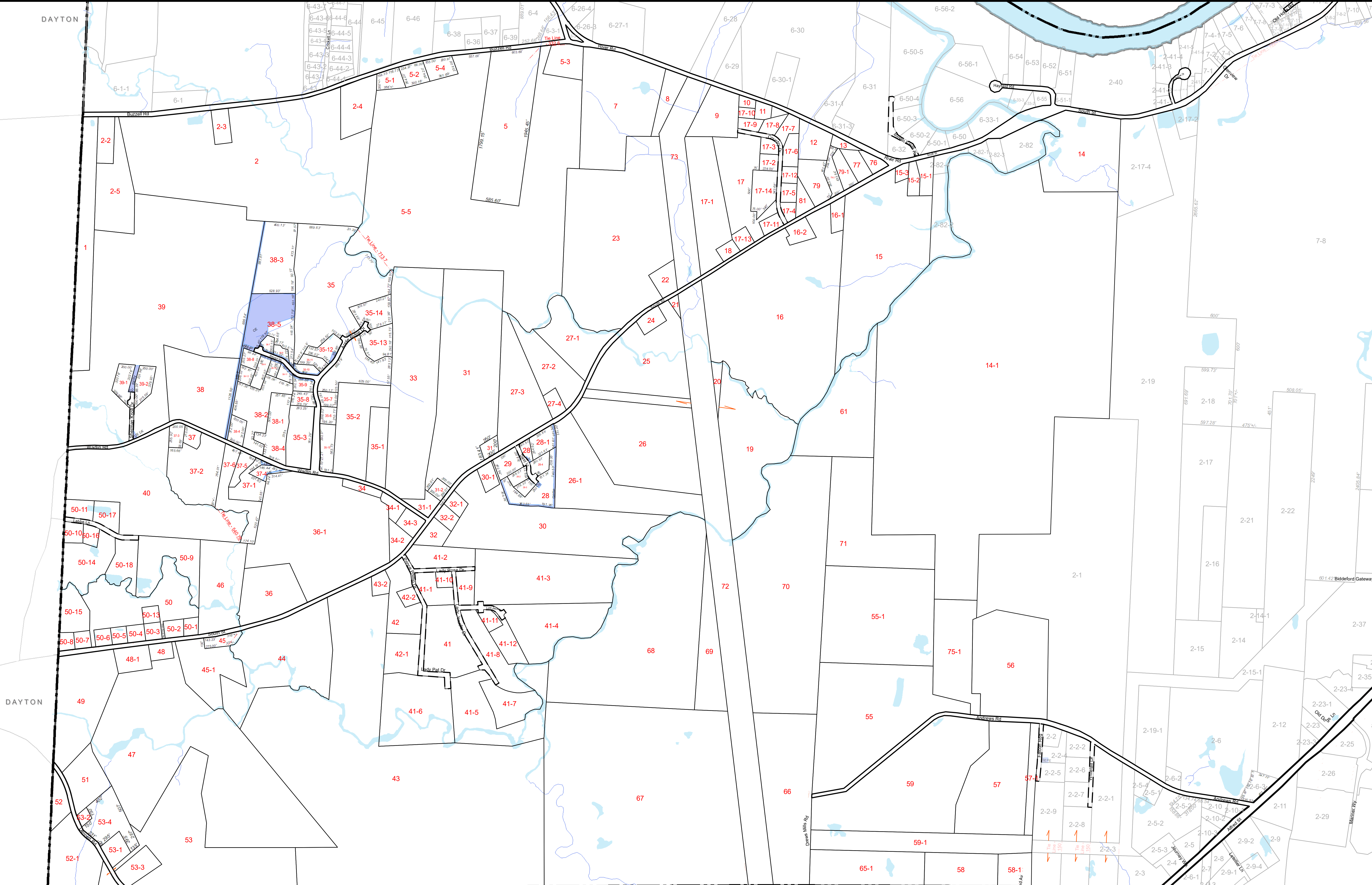
1 inch = 500 feet
UPDATED THROUGH APRIL 1, 2020
FOR ASSESSMENT PURPOSES ONLY
NOT TO BE USED FOR CONVEYANCES

The City of Biddeford, Maine
OFFICIAL TAX MAP
Office of The Tax Assessor
Nicholas D. Desjardins, CMA
Assessor



This Map is Prepared By
The City of Biddeford, Maine
Technology Department
GIS Division
205 Main Street - P.O. Box 386 - Biddeford, Maine 04005
207-571-0660 - gis@biddefordmaine.org

1
Tax Map



DAYTON

ARUNDEL

Arundel Rd

Alfred St

Old Alfred Rd

Alfred St

Alfred St

Alfred St

Alfred St

Alfred St

Alfred St

Alfred St

Alfred St

Alfred St